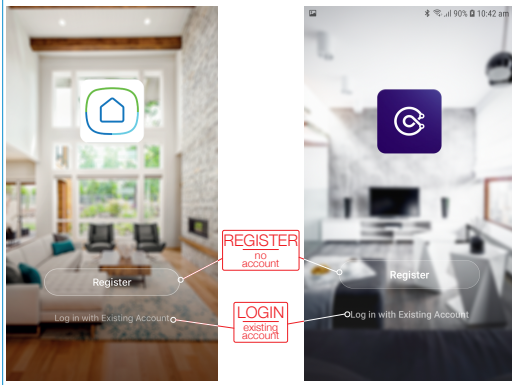
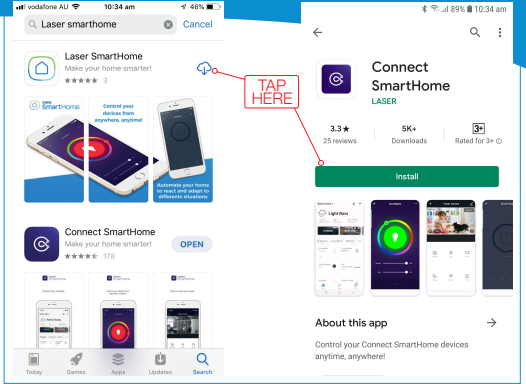


Manual

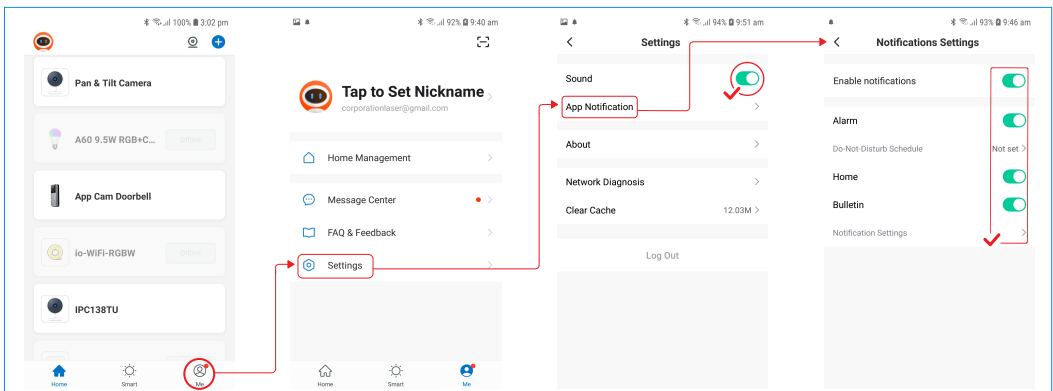
Smart 360° Full HD Pan & Tilt Camera

1 GET THE APP



2 REGISTER OR LOGIN TO APP

3 RECOMMENDED APP SETTINGS





STEP ONE



STEP TWO

4 | POWERING CAMERA

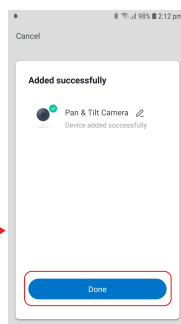
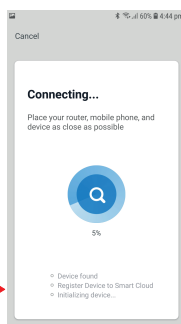
5 | CONNECTING CAMERA TO APP

YOUR CAMERA IS READY TO PAIR!

Reset the device first.
Power the device on and make sure the indicator is flashing quickly or a prompt tone is heard

Enter Wi-Fi Password
Only 2.4G Wi-Fi networks are supported

Use Camera to Scan QR Code
Tap Next. The mobile phone displays a QR code. Use the camera to scan to the QR code 15 cm to 20 cm away from the mobile phone.



TIP
If device not found please check

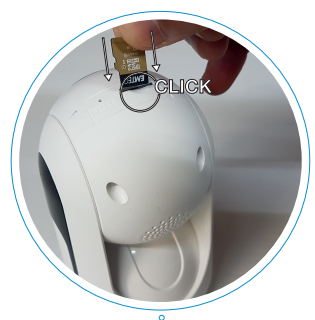
Only 2.4G Wi-Fi networks are supported

2.4GHz 5GHz

MICRO SD CARD FOR MOTION DETECTION RECORDINGS

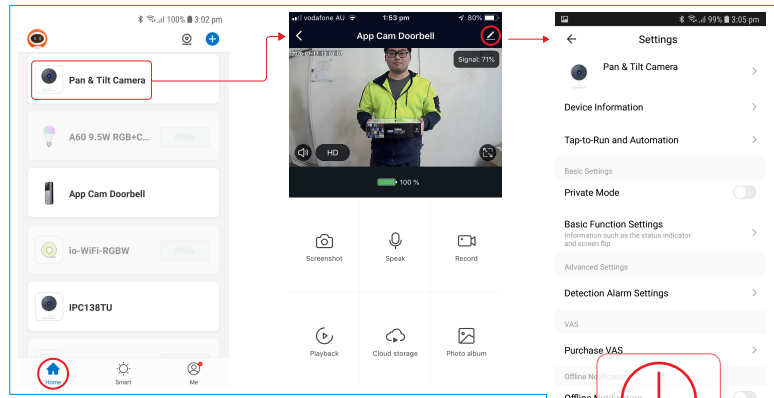


STEP ONE



STEP TWO

6 CAMERA SETTINGS



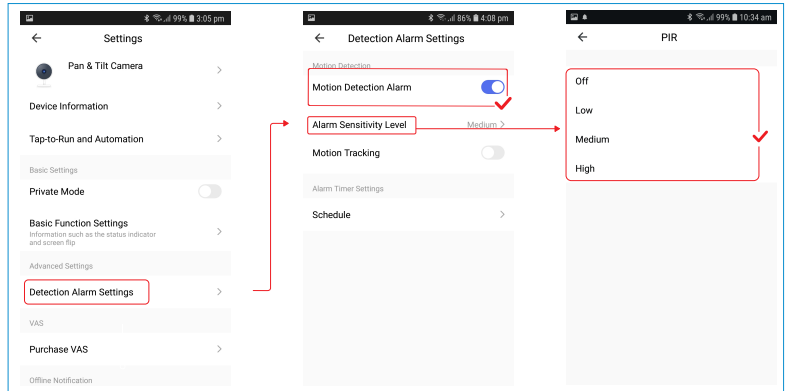
7 REMOVING CAMERA



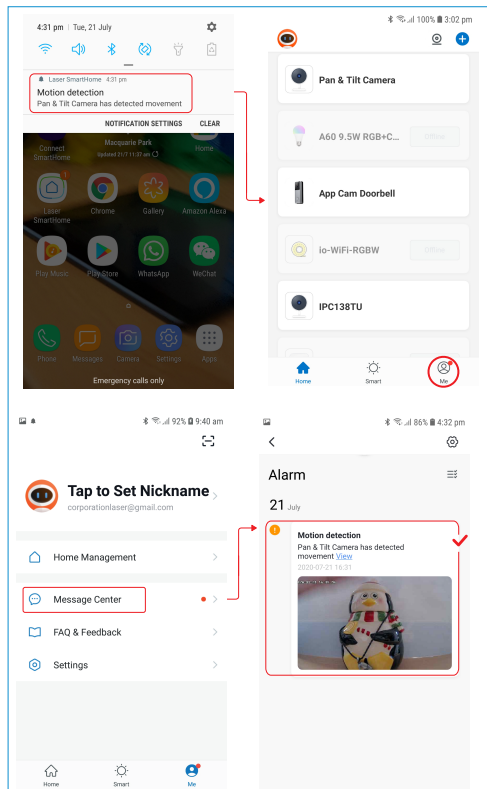
MOTION DETECTION



MOTION DETECTION SETTINGS





MOVEMENT DETECTED PHOTO

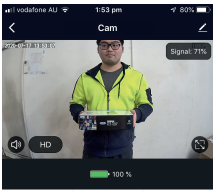


MOVEMENT DETECTED VIDEO

MICRO SD
CARD REQUIRED



Cam



Signal: 71%

Snapshot

Speak

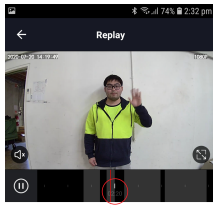
Record

Playback

Cloud storage

Photo album

Replay



Date

Record

SELECT TIME&DATE

9

MOTION TRACKING



Settings

Pan & Tilt Camera

Device Information

Tap-to-Run and Automation

Basic Settings

Private Mode

Basic Function Settings

Advanced Settings

Detection Alarm Settings

VAS

Purchase VAS

Offline Notification

Detection Alarm Settings

Motion Detection


Motion Detection Alarm

Alarm Sensitivity Level

Motion Tracking

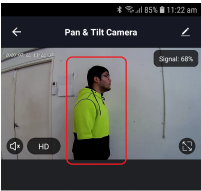
Alarm Timer Settings

Schedule



MOTION
TRACKING

Pan & Tilt Camera



Signal: 68%

Snapshot

Speak

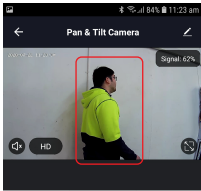
Record

Playback

Cloud storage

Direction

Pan & Tilt Camera



Signal: 62%

Snapshot

Speak

Record

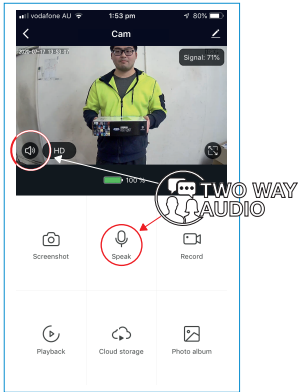
Playback

Cloud storage

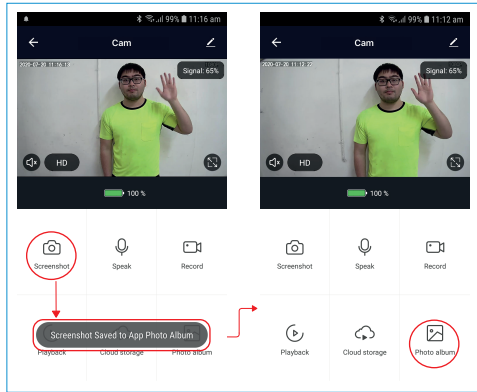
Direction

13 | CAMERA FEATURES

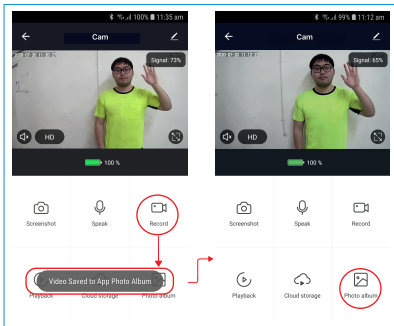
2 WAY AUDIO



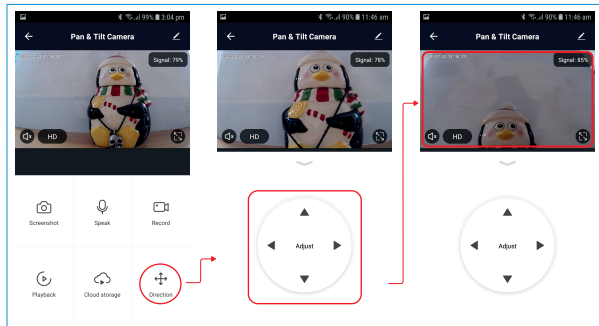
TAKE SCREENSHOT



TAKE VIDEO



ADJUST CAMERA VIEW



For more helpful guides visit us at



LASER

www.youtube.com/LasercoAu

CONNECT

www.youtube.com/channel/UCCYzBiADapJN55Zzp3yfvLQ

WARRANTY

Our goods come with guarantees that cannot be excluded under the Australian Consumer Law. You are entitled to a replacement or refund for a major failure and compensation for any other reasonably foreseeable loss or damage. You are also entitled to have the goods repaired or replaced if the goods fail to be of acceptable quality and the failure does not amount to a major failure.